



Your Journey. Your Story. Your Legacy.

Thoughtful Design For Lives Well Lived.

“Every project is its own design journey — shaped by how people live, the land they love, and the legacy they want to leave behind.”

At Z Group Architecture & Interior Design, we believe in crafting transformative spaces that tell a story, reflect our client’s vision and values, and leave a lasting legacy. Every home begins with a conversation rooted in curiosity and context, exchanging ideas, insights, and creativity with each client. From that dialogue, the land begins to speak. We listen closely — to contours, climate, light, and view — designing with quiet intentionality that reflects both the environment and the individuals we serve.

Our work is grounded in the elevated environments of the Mountain West, where architecture must do more than respond to the site — it must belong to it. Here, the line between indoors and out is not a boundary but a relationship, expressed through enduring materials, timeless elegance, and a clarity that allows life to unfold naturally.

Each project is a story. We’re here to help shape it — with care, craft, and purpose. At its most thoughtful, architecture creates enduring connections between people, place, and the lives they aspire to lead.



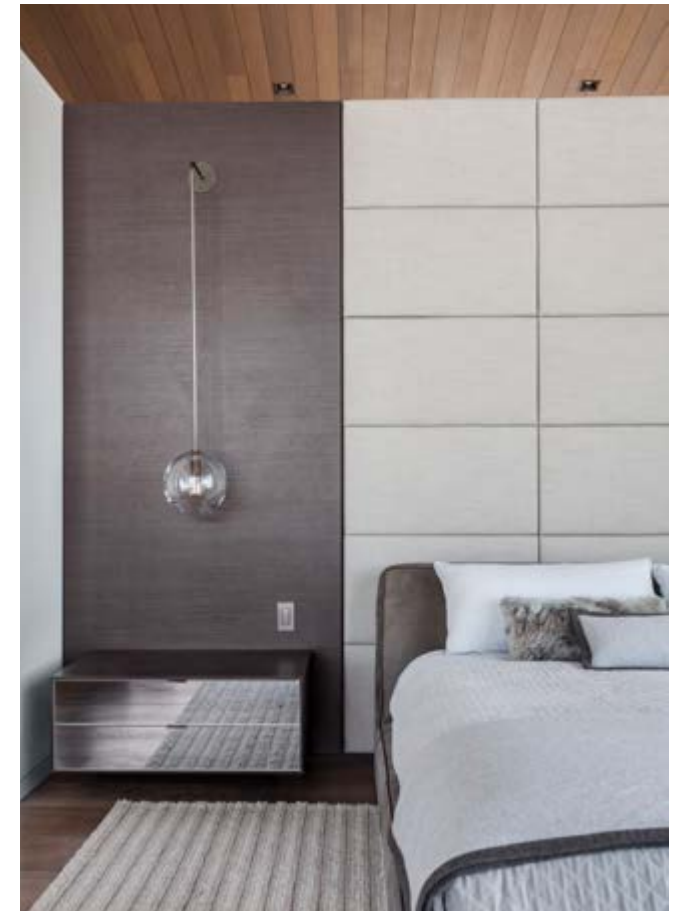
ELYSIUM







LEGACY. Created for generations to gather, this home was imagined as a modern-day heirloom — a place where stories are shared, seasons are marked, and traditions take root. Strong lines and enduring materials express a sense of permanence, while expansive living spaces remain deeply connected to the land. There's generosity in the way the home opens and serenity in how it rests. More than a residence, it's a lasting expression of family, place, and purpose.



IKIGAI





WELLNESS. Designed as a place to slow down and breathe deeply, this retreat embraces the philosophy of living with intention. Every element – from the quiet rhythm of wide corridors to the textures and palette of natural materials – invites a sense of calm. Light filters in softly, views unfold with care, and thresholds blur between indoors and out. It’s a home that both holds and honors life, creating space for reflection, restoration, and a deeper connection to the land and one another.



The kitchen features light wood cabinetry and a dark countertop. A central island with three white bar stools is positioned in front of the main counter. The backsplash is made of dark, textured stone. A built-in shelving unit on the right wall holds various decorative items, including a menorah, a bowl, and several small figurines. The floor is made of light wood, and a white wall with a large window is visible in the background.

A built-in shelving unit on the right wall holds various decorative items. The items include a black menorah, a small vase with flowers, a wooden bowl, a small ceramic figurine, and several small, light-colored figurines. The shelves are dark wood, and the wall is white.

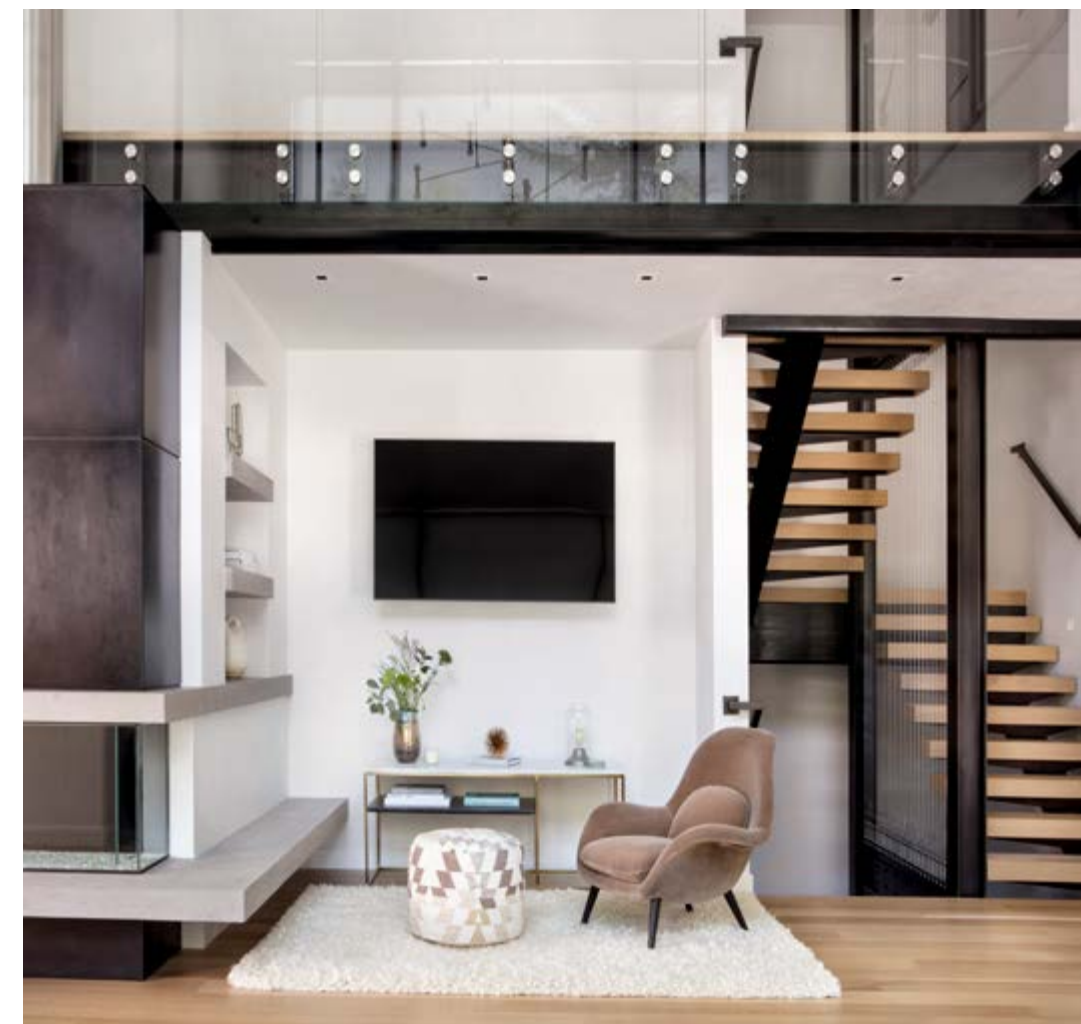
A wooden staircase railing with dark wood balusters is visible in the foreground on the right side of the image. The railing is made of dark wood and has a simple, modern design. The floor is light wood, and a patterned rug is partially visible under the stairs.



DULCINEA

ELEGANCE. Rooted in old-world charm and designed for a life well-lived, this residence is both poetic and precise. Artisanal details and sun-warmed textures create a sense of softness and welcome, while bold architectural forms and materials provide definition. Spaces unfold like a story — one that honors tradition while embracing modern comfort. It's a home for lingering conversations, for quiet mornings and candlelit evenings, and where architecture becomes the backdrop to a deeply personal way of living.





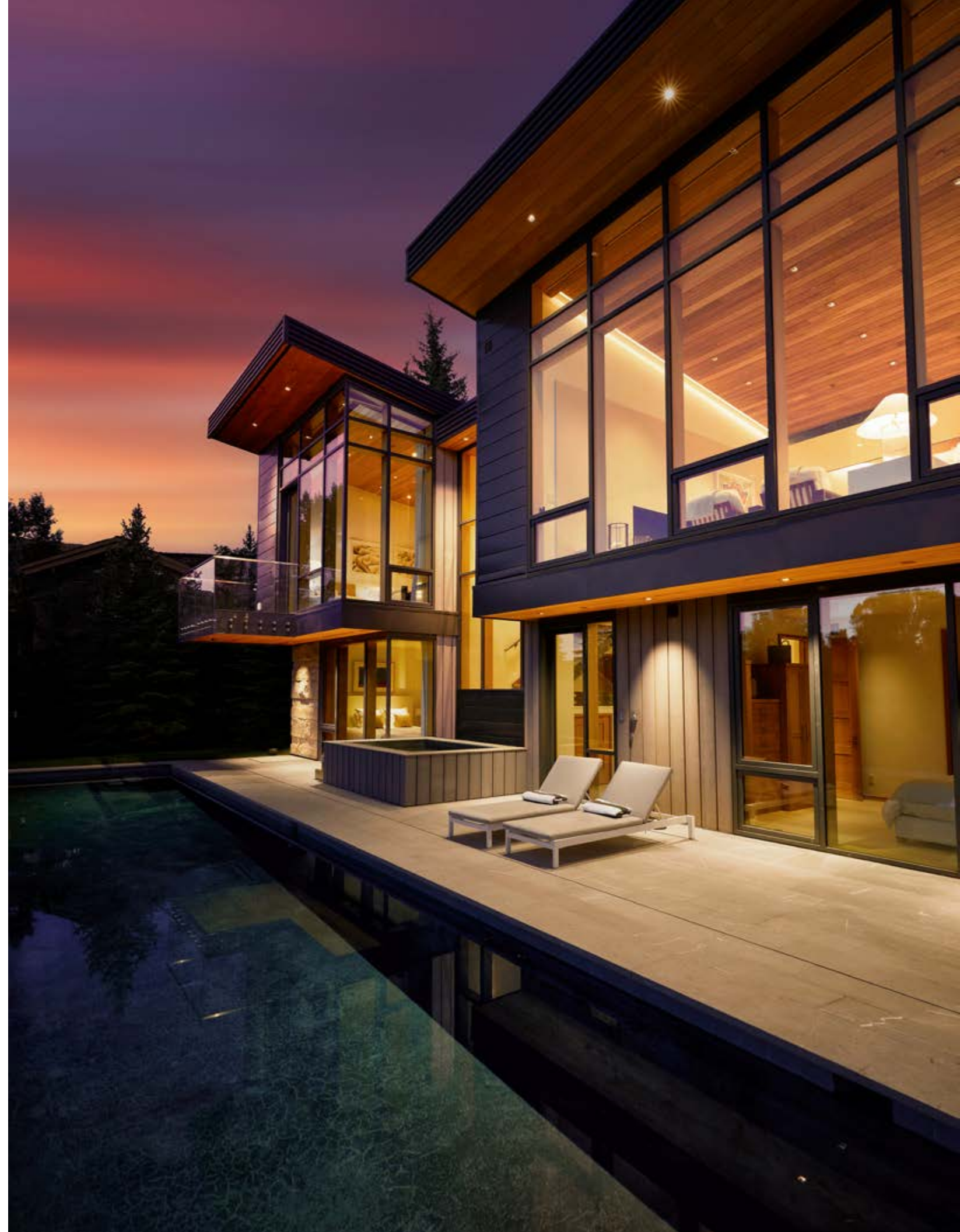


SHADOW MOUNTAIN





ELEVATION. Perched with intention, this home is both refuge and revelation — a place where elevation brings clarity and connection. Structured lines and natural textures give the architecture a quiet strength, while every interior moment is designed to frame sky, slope, and stillness. Daylight moves through the spaces like a companion, shifting the atmosphere from vibrant to serene. It's a home that rises gently from the land, offering perspective, privacy, and a deep sense of belonging.

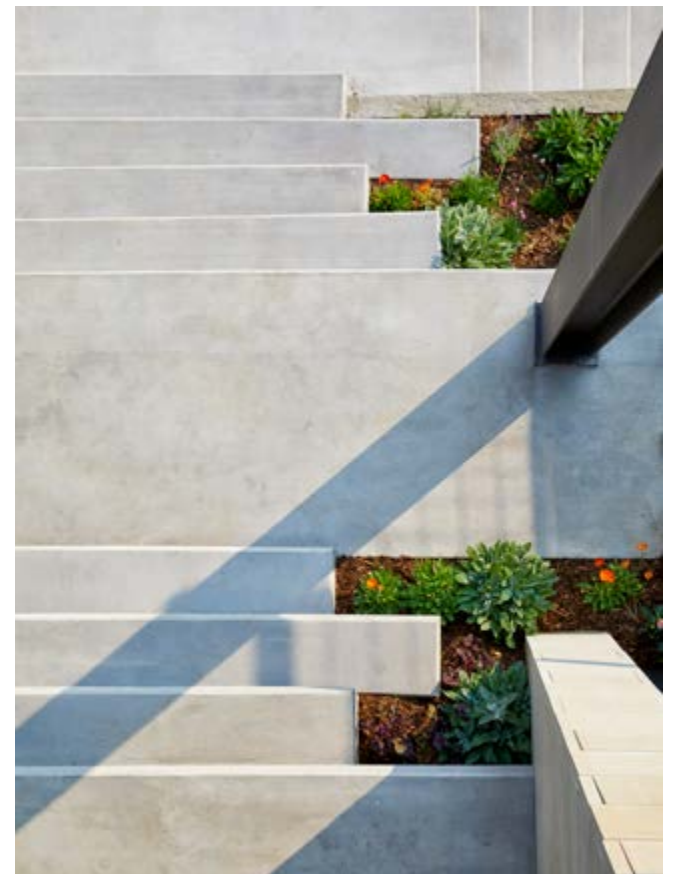




STRATA

HORIZONS. Composed with layers of intention, this home is a study in balance — between openness and enclosure, light and material, movement and rest. Horizontal lines stretch with quiet confidence, drawing the eye outward to meet sky and land. Interiors are spare yet warm, with spaces designed for gathering and for solitude. Rooted in its site but always looking forward, the home offers a sense of expansion that feels both grounded and liberating.









WOODY CREEK







BALANCE. Shaped for ease, rhythm, and connection, this single-level home reflects a quiet confidence — its long, low form resting gently on the land. Every element is intentional: broad hallways for effortless movement, natural materials for warmth and tranquility, and expansive windows that welcome in the light. Interior and exterior blend in seamless conversation, creating a sense of balance that supports both independence and togetherness. It's a home that lives lightly on the land while holding space for the rhythms of daily life.





About Z Group.

Built on the legacy of Aspen's first architecture firm founded in 1952, Z Group Architecture & Interior Design has been creating luxury homes that are as intentional as they are beautiful, balancing site sensitivity with the deeply personal rhythms of how people live.

Today, under the leadership of Seth Hmielowski, Scott McHale, and Brittany Biebl, the firm continues to evolve — blending inspiring design, construction expertise, and collaborative leadership into a practice that is both grounded and visionary.

Each brings a perspective shaped by decades in the region and a shared commitment to homes that last beyond a lifetime.

We focus on high-altitude residential design that honors its setting — homes that settle into the land, connect across generations, and reflect a lifestyle attuned to nature, privacy, and meaning. Whether designing a private retreat, a legacy estate, or a refined family compound, our approach is rooted in collaboration and defined by people and place.

We believe the best homes feel inevitable — not because they are easy, but because they are designed with care, clarity, and purpose to fit and elevate the unique lives of those who reside within.





Z GROUP

ARCHITECTURE &
INTERIOR DESIGN

SETH | 970.319.8327
SCOTT | 970.708.5035

www.zgrouparchitects.com

@zgrouparchitects

ASPEN

